

WAIMAHIA WHĀNAU
INTERMEDIATE SCHOOL
HANDBOOK 2025



OUR WHAKATAUKI

**Māku anō e hanga tōku nei whare
Ko te tāhuhu he hīnau, ko ngā poupou he
māhoe, patatē.**

**Me whakatupu i te hua o te rengarenga,
Me whakapakari ki te hua o te kawariki.**

I, myself, shall build my house.
The ridge-pole made of hīnau, supporting posts
of māhoe and patatē.
Raise the people with the fruit of rengarenga,
strengthen them with the fruits of the kawariki.



OUR VALUES

MANA

Ownership, self-belief,
identity, integrity.

MANAAKITANGA

Respect, service,
inclusiveness, care.

MĀTAURANGA

Inquiry, creativity,
innovation, enterprise.





PRINCIPAL'S WELCOME

Kia ora koutou katoa, talofa lava, kia orana, malo e lelei, fakaalofa lahi atu, bula vinaka, namaste, malo ni -

WELCOME TO WAIMAHIA!

Waimahia Intermediate School students are proud of who they are and who they come from. Students at our school know that who they are as a person is valued, encouraged and enhanced here at school.

We believe that success is more than reading, writing and maths. Success for our students also encompasses their character and their readiness to take on challenges after they leave our school. To achieve success for your child our committed team of teachers and support staff strive to provide a positive, safe environment in which quality teaching and learning occurs.

We look forward to meeting each of you and working with you to equip your child for the next part in their learning and life.

Soifua ma ia manuia!

Melini Fasavalu
Principal

"Our vision is for young people to be positive in their own identity..."

NZ Curriculum p. 8

OUR LEARNING

Intermediate schooling is about bridging between primary and secondary schools. Intermediate schooling is also about supporting early adolescents to start thinking about who they would like to be as a learner and as a person.

As an intermediate school with smaller class sizes, teachers are able to build learning focused relationships with each student in their class. This allows teachers to provide responsive teaching programmes that cater to students' individual needs.

AT WAIMAHIA OUR CURRICULUM PROVIDES:

- Literacy and maths teaching to cater for students' individual needs
- Meaningful project-based inquiry learning where students practice and apply their literacy and maths skills
- A specialist Arts and Technology programme
- Opportunities to learn Te Reo Māori and/or Gagana Sāmoa
- Opportunities to learn about and share their cultural identity and that of others
- Opportunities to experience and compete in a range of sports
- Education Outside the Classroom programmes
- Opportunities to grow leadership potential
- Opportunities for extra-curriculum learning after school
- Individual and collective support to ensure learning will occur



STUDENT-LED LEARNING

In order to determine their own destiny, our students need to have the skills, mindset and courage to take charge of their own learning.

ACTIVE LEARNER TRAITS

Students at Waimahia learn what an active learner looks like and how they can be more active in their learning. Active learner capabilities are linked with Positive Behaviour for Learning and Life. These skills are constantly reinforced by all teachers across all learning areas.

STUDENT VOICE

Student voice plays an important part in maintaining the quality of our teaching. Teachers consistently ask students to evaluate if teaching actions support their learning.

Student voice also plays an important part in the projects we undertake. All projects are high interest and meaningful for students.

Students are given multiple opportunities to lead at Waimahia. They serve the school by leading assemblies, cultural groups, sports teams, and school events.



**THE BEST THING ABOUT
WAIMAHIA IS WORKING
WITH PEOPLE THAT
THINK DIFFERENTLY OR
OUTSIDE THE BOX.**



**ASHTON MATTHEWSON
YEAR 8 2022**

OUR CORE CURRICULUM

PROJECT BASED LEARNING

Project Based Learning starts with a real-life and relevant problem or opportunity as the catalyst for inquiry. Students learn and use research skills to explore the possible solutions that solve a problem, make the most of an opportunity, or take an informed stance on issues they feel strongly about. **PBL requires our students to be researchers, designers, problem solvers and evaluators.**

LITERACY

Literacy programmes are designed to meet student individual needs. **Literacy is purposefully integrated into all learning.** Students have multiple opportunities to learn and practice the literacy skills and knowledge needed to successfully complete learning tasks across the curriculum. Learning tasks in PBL, Specialist Programmes and other programmes provide real purpose for reading and writing.

MATHS

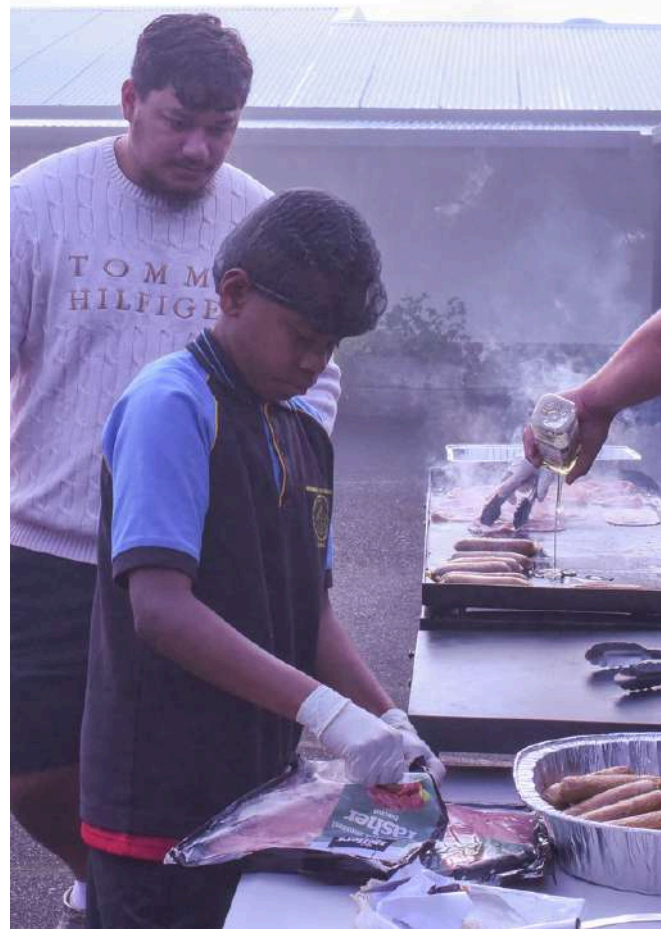
Mathematics is purposefully **integrated across the curriculum within a problem solving framework.** Students will have multiple opportunities to learn the mathematical skills, knowledge and language needed to successfully complete learning tasks across the curriculum. All strands of the Mathematics curriculum are taught, however there is an emphasis on Number and Algebra.



SPECIALIST TECHNOLOGY

S.T.E.M.

STEM projects focus on the teaching of Science, Technology, Engineering and Math skills needed to complete a project from design to production. **STEM provides opportunities for our students to be designers, thinkers, makers, & creators.** STEM projects are deliberately hands on and require problem-solving. STEM includes what used to be known as Hard and Soft Materials technology.

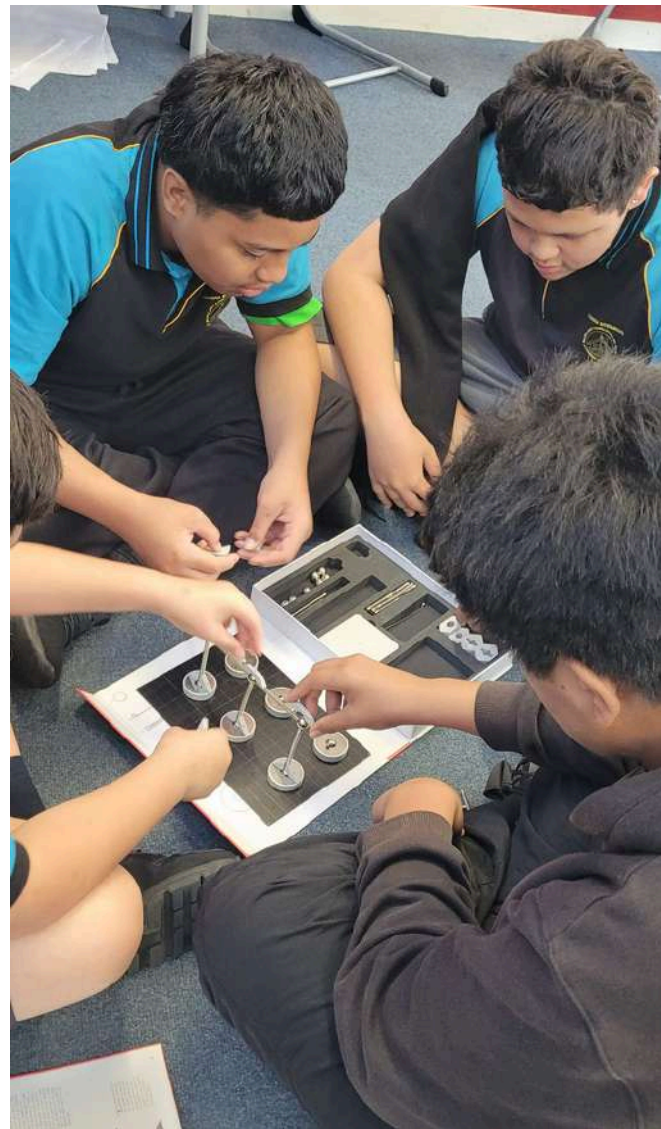


FOOD TECHNOLOGY

Food Technology focuses on the cooking, math, literacy, hygiene and safety needed when **cooking for ourselves, our family, our community.** Students work towards completing a mini catering challenge for real taste-testers who provide feedback on their dishes.

ROBOTICS

Focus is on the skills and dispositions needed to build and program robots capable of completing a series of mini-challenges. **Successful programmers understand the big picture** of the challenge and have the **attention to detail** needed to program specific actions. Students have opportunities to compete in Robotics competitions.



SPECIALIST ARTS

MUSIC

Students explore elements of music with a variety of instruments, including voice, keyboard, guitar and body percussion, to **represent sound and musical ideas**. They **learn to make music** with others and respond to live and recorded music while exploring the various purposes of music in our lives. Students work towards an end of term performance.



VISUAL ARTS

Students learn a range of visual art techniques that are important across multiple art mediums. **Creativity requires our students to be courageous**, take on feedback and show perseverance and focus as they work towards an exhibition at the end of the term.

DRAMA

Students explore, learn and use drama techniques and elements to communicate their ideas. These elements include movement, space, language, voice, mood, role & character. Students **create, evaluate, persevere and problem-solve** their way towards a performance at the end of the term.



**AT OUR SCHOOL YOU GET TO SHOW
WHO YOU REALLY ARE, BE
YOURSELF AND EXPRESS YOUR
TRUE COLOURS.**



**NORMA-JADE RAEINA
YEAR 8 2022**

OUR BILINGUAL CLASSES

Bilingual education is where teaching happens in two languages and students work towards becoming biliterate or fluent speakers, readers and writers in both languages by the end of their schooling. The goal is for our students to become biliterate - able to understand, speak, read and write in English and their heritage language.

"Research highlights that becoming biliterate is the key to academic success."

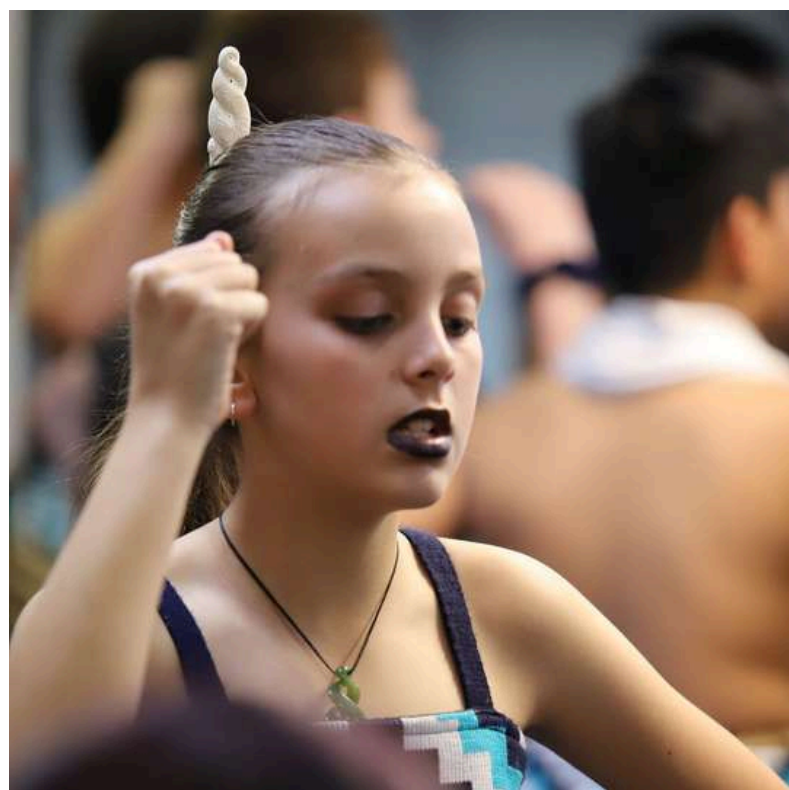
Prof. Stephen May
University of Auckland

Te Manukura Maia is our bilingual Māori whānau.
Apolima Ipu o le Ola is our bilingual Samoan aiga.

Both classes cover the same format for learning as all our students. However, the projects and other contexts for learning will come from a 'te ao Māori' and 'faa Samoa' perspective. Projects will be chosen to provide opportunities for our bilingual learners to celebrate and expand their understanding of what it is to be Māori and/or Samoan in New Zealand.

There are timetabled sessions when teaching and learning is in te reo Māori or gagana Samoa and times where teaching and learning is in English. Specific language teaching will take place where students learn te reo Māori or gagana Samoa.

If you would like your tamariki or alo to learn in this bilingual setting, please complete the additional enrolment form.



SPORT AND E.O.T.C.

PHYSICAL EDUCATION

P.E. units of learning are centered on the skills needed for the sports we participate in at the Counties Manukau tournaments. We are supported by Counties Manukau Sport and Kiwi Sport.

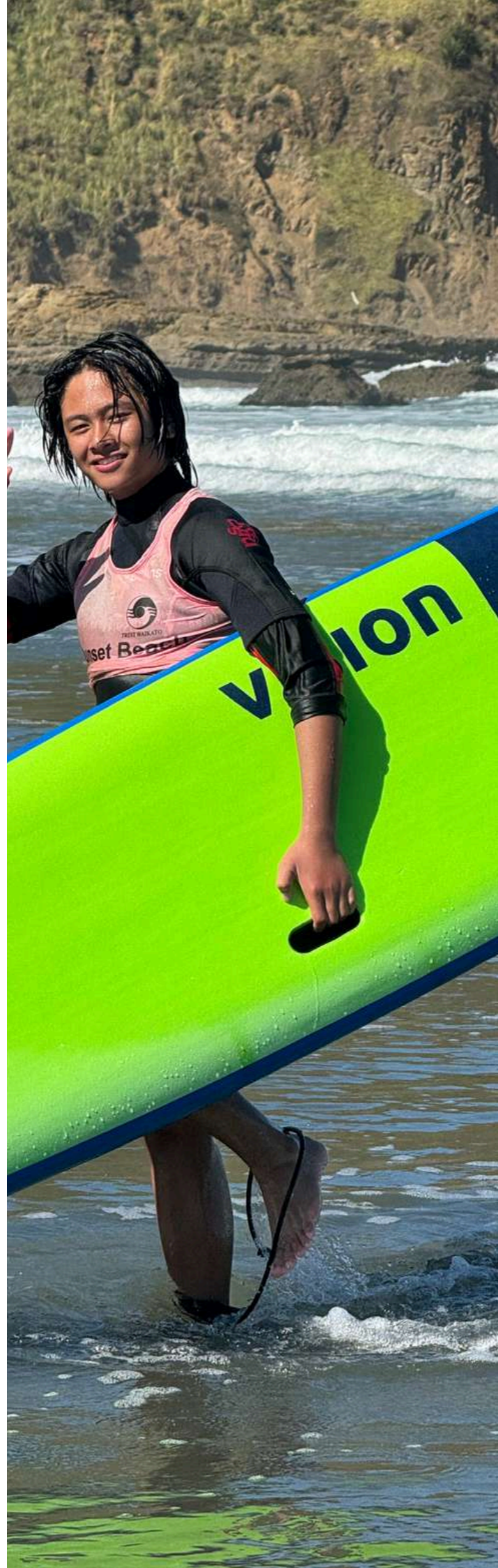
SPORTS

We participate in multiple Counties Manukau sports tournaments each term. All students have the opportunity to trial for teams. Coaching usually happens at lunch times and after school. You will receive an information permission letter if your child is selected to represent our school at a tournament. We also provide opportunities for students to train for and compete at a yearly Sports Camp for intermediate schools.

E.O.T.C.

Education Outside The Classroom includes local walks, day trips and camps. EOTC events are planned as part of a learning programme. In 2024 we have 2 camps:

- Rangatira camp - Term 1 for student leaders
- Year 8 Wellington Trip - Term 3 for all Year 8 students



A SENSE OF BELONGING

LEARNING FOCUSED RELATIONSHIPS

Teachers at Waimahia make it their business to build learning focused relationships with each of their students. Although your child will have multiple teachers, one **will know your child's strengths, interests and needs**. This enables the teacher to provide meaningful learning for your child.

WHĀNAU

Every student belongs to a whānau - **Mahuika, Papatūānuku, Tangaroa or Tawhirimātea**. Students are proud of the whānau they belong to. Whānau programmes focus on our school values. Each whānau take turns to organise fortnightly assemblies. Inter-whānau lunchtime sports are hotly contested each week.

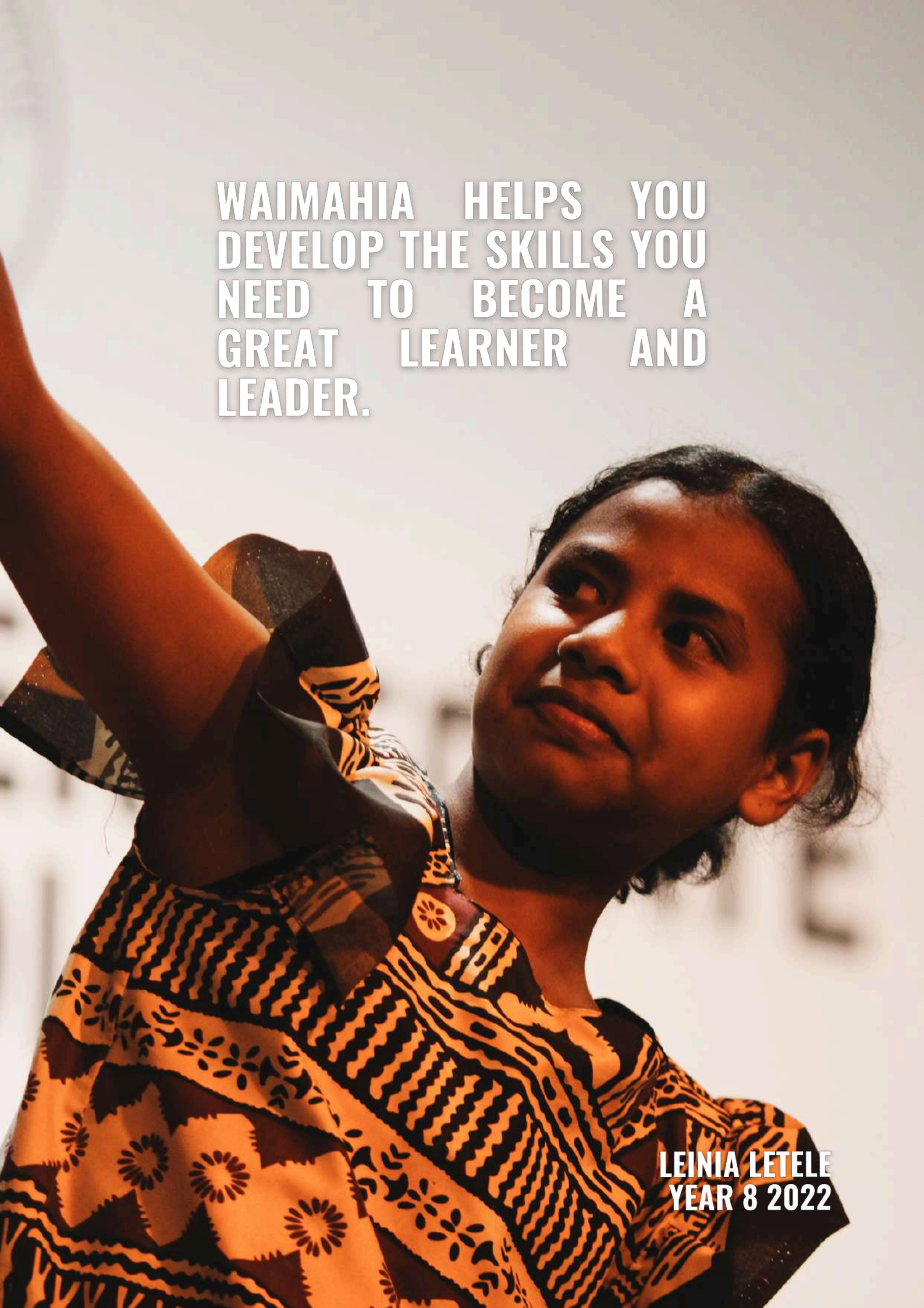
CULTURACY

Our Culturacy programme provides opportunities to **strengthen and share their culture with others**. Students also learn about others' cultures and have opportunities to make comparisons with their own. **A strong sense of who they are gives them confidence for learning and life**.

LALAGA

Every student belongs to a Lalaga group which runs once a week. The purpose of Lalaga is to ensure that each student has good connection with at least 3 adults at Waimahia: their classroom teacher, their Whānau teacher, their Lalaga teacher. As a result **every child in the school knows that they have adults who they can speak to, who has time for them, has their back and genuinely cares for them**.



A young girl with dark hair, wearing a black and orange patterned dress, is looking upwards with her right arm raised. The background is a plain, light-colored wall.

**WAIMAHIA HELPS YOU
DEVELOP THE SKILLS YOU
NEED TO BECOME A
GREAT LEARNER AND
LEADER.**

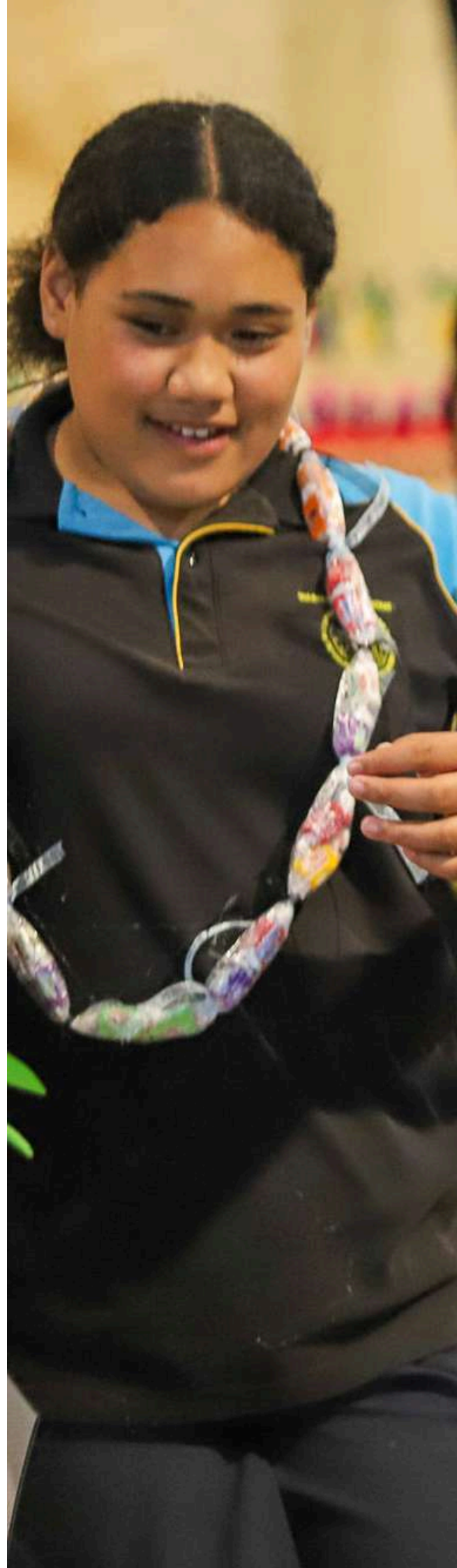
**LEINIA LETELE
YEAR 8 2022**

STUDENT SUPPORT

Everyone needs support from time to time when they are learning. As well as teachers who know them well, students also form learning focused relationships with their whānau teachers and peers. Extra student support is coordinated by our Deputy Principal, Jayne Irwin and draws on internal support from our Learning Assistants as well as external agencies.

SUPPORT AVAILABLE AT WAIMAHIA

- **Learning Assistants**
Group and individual programmes
- **Social worker**
Group programmes
- **RTLB**
Work alongside teachers to support individual and groups
- **Quick 60**
Literacy programme
- **ESOL**
Oral language programmes
- **Ministry of Education**
Individual programmes
- **Mana Clinic Nurses**
Onsite every morning
- **Other government agencies**
- **Other non-government agencies**



FURTHER OPPORTUNITIES FOR STUDENTS

STUDENT LEADERSHIP

All students are given multiple opportunities to lead at Waimahia. They serve the school by leading assemblies, cultural groups, sports teams, and school events.

Our Rangatira group are student leaders within the school. Children can apply to be part of the group at the end of their Year 7 year. Our four Head Students are selected from this group at the beginning of every year.

AFTER SCHOOL PROGRAMMES

At Waimahia opportunities for learning extend outside school hours. We provide a variety of after school programmes to enhance the learning and talents of our students. The programmes range from enhancing Writing and Maths to Sports to Empowerment and Leadership.



GENERAL INFORMATION



SCHOOL HOURS

School begins at 9am and finishes at 3pm everyday. Students have two breaks during the day at 11am and 1.20pm.

UNIFORMS

School uniforms can be purchased from *The Uniform Shoppe* at 1 Ronwood Ave, Manukau. Whānau tees and bucket hats are available for purchase at the school office.

STATIONERY

A stationery list will be available upon enrolment if you would like to take advantage of Back to School sales.

FREE HEALTHY LUNCHES

We are part of the Ministry of Education's Free Healthy Lunches programme. Please ensure we know about food allergies and restrictions.

ENROLMENT INFORMATION

Enrolment forms are available from our school office, your primary school or online via our website.

For a tour of the school or any other queries, please contact Jayne Irwin or Melini Fasavalu using the contact details on the back page.

KEY DATES

Enrolments are now open

Tuesday 13th August 2024

Open Day activities

Wednesday 14th August 2024

Open Day activities

Wednesday 28th August 2024

Out of Zone applications close

Friday 30th August 2024

In Zone applications due

Wednesday 4th September 2024

Out of Zone ballot

Monday 21st October 2024

Enrolment interviews start by
appointment

2025

Tuesday 28th January 2025

School office opens

Monday 3rd February 2025

School starts for Y8 students

Tuesday 4th February 2025

School starts for Y7 students

We will hold a **powhiri at 9am on Tuesday 4th of February** to welcome all new students, whanau and aiga. Please assemble on the astroturf.

**ENGAGED, ACHIEVING,
CONFIDENT IN OUR
IDENTITY**



(09) 266 7455

WWW.WAIMAHIA.SCHOOL.NZ
ADMIN@WAIMAHIA.SCHOOL.NZ